

# BITUTWIN

Torch applied SBS modified bitumen waterproofing membrane 4 and 5 mm thick, using a combination of Polyester and Glass Fiber Reinforcement.

## DESCRIPTION

BITUTWIN is a high-performance torch applied membrane manufactured from SBS modified distilled bitumen, reinforced with a combination of spun bond non-woven polyester and glass fiber.

It is designed to have superior properties and functionalities of both polyester and glass fiber reinforcement for a wide range of construction applications. The combination of polyester and glass fiber gives the membrane its excellent mechanical properties, allowing for high tensile, elongation and tear strength.



## ADVANTAGES

- Positive barrier to water ingress and dampness
- Excellent resistance to aging & weathering
- Flexibility at low temperature
- Stability at high temperature
- High tensile strength & tear resistance
- Accommodates structural movements
- Fast, easy and clean application
- Higher dimensional stability
- Superior puncture resistance

## SPECIFICATION COMPLIANCE

BITUTWIN membranes comply with ASTM D 6162 Type II Grad S standard specification and can be tested as per ASTM D 5147, UEAtc standards test method or any relevant international standard.

### Certificates

The manufacturing facility is certified with the ISO 9001:2015 QMS, GMP, ISO 14001 E M and ISO 45001 OH & S.



## Technical Data

PROPERTIES	RESULTS	UNIT	TEST METHOD
Thickness	4 ± 0.2	mm	ASTM D-5147
Length	10	Mt.	ASTM D-5147
Width	1	Mt.	ASTM D-5147
Mass/unit area	4.2 ± 0.2	Kg/m <sup>2</sup>	ASTM D-5147
Softening Point (Ring & Ball)	>115	°C	ASTM D-36
Penetration	12 to 25	dmm	ASTM D-5
Tensile strength (L&T) @23°C±2	900/650	N/5cm	DIN 52123 UEAtcM.O.A.T.30
Elongation(L&T) @23°C±2	50/55	%	DIN 52123 UEAtcM.O.A.T.30
Tear resistance(L&T) @23°C±2	450/400	N	ASTMD-4073 ASTM D-5147
Heat Resistance for 2 hours	No Flow @110	°C	ASTM D-5147
Cold Flexibility	> -18	°C	ASTM D-5147
Water Absorption	< 0.2	%	ASTM D-5147

The information given in this data sheets is the average of test of various samples conducted under lab conditions.  
\*In accordance to ASTM and UEAtc Standards results are subjected to 5 to 20% tolerance.

## USES

To avoid damp & water leakage risk, it's recommended for:

- Concrete roof and floor slabs
- Basements
- Foundations
- Swimming pools
- Fountains
- Drain gutters
- Bathrooms
- Reservoirs
- Bridges
- Tunnels
- Sub grade structures
- Car park deck slabs

# BITUTWIN

Torch applied SBS modified bitumen waterproofing membrane 4 and 5 mm thick, using a combination of Polyester and Glass Fiber Reinforcement.

## INSTRUCTIONS FOR USE

### SURFACE PREPARATION

All surfaces should be smooth and free from all harmful objects and thoroughly cleaned, from (nails, grease, dust, debris, oil, protruding elements etc.)

### PRIMING

Apply liberal coat of the recommended primer and we recommend using Sealcoat D41, allow the primer coat to dry until it is tack free prior to the application of the membrane. All surfaces must re-primed if left for more than 24 hours.

### APPLICATION

The membrane is unrolled and placed in the correct position where it is to be torched on later. Each roll must overlap at least 10-cm while slowly unrolling the membrane. The surface is lightly heated by means of a propane gas torch causing surface melting and subsequent adhesion to the surface. End joints should be made with a minimum of 15-cm overlap. It is recommended to protect the membrane from long-term exposure, construction abuse and backfill, within 24 hours. On vertical areas BITUBOARD are recommended: on horizontal surfaces sand cement screed may be used.

### APPLICATION TOOLS AND EQUIPMENT

- Propane gas torch with related gas cylinder
- Knife/ cutter
- Trowel with around tip
- Protective gloves and goggles
- Marking aids
- Measuring tape
- Fire extinguisher



# HEALTH, SAFETY AND ENVIRONMENT

All safety measures should be observed during application. Fire extinguishers should be available on site. Care should be taken with gas, and torches should not be rested on finished surface or on any materials that can be scratched by flame or hot torch. Gloves and goggles should be worn by all workers during application.

Read, understand and follow all Material Safety Data Sheets and product label information for this product prior to use.

### STORAGE

- Keep the products packed in a dry place.
- Keep away from direct sunlight.
- Do not place the pallets on top of each other.
- Rolls must always be kept in a vertical position.

### TECHNICAL SUPPORT

International Insulation Company (IIC) - Bitugulf technical support team consist of expert engineers offers a comprehensive service support to specifiers, end users and contractors, and on-site technical assistance.

### INTERNATIONAL INSULATION COMPANY (BITUGULF)

#### Factory

Western Shuaiba Industrial, Block (3), Building (90),  
Opposite of Kuwait Steel Co.

Telephone: (+965) 23262824 (Factory)

(+965) 90019846 / 90019917 / 96600332 (Sales)

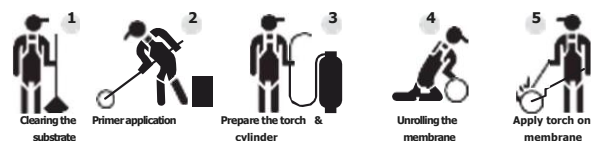
Email: info@bitugulf.net

#### Showroom

Shuwaikh Industrial, Block (A), Building (139),  
Opposite to Hyundai Maintenance Center

Telephone: (+965) 24912765 / 94122711

Email: showroom@bitugulf.net



**Note:** The technical data provided reflects typical properties based on laboratory tests and practical experience, subject to UEAtc tolerance levels. While we cannot guarantee performance under all conditions, further details are available upon request, with a standard variation of up to 20%.